

Ripon Area School District  
**Ripon School News**

APRIL 2015

"MORE CHOICES. BETTER RESULTS."

WWW.RIPON.K12.WI.US

**From the Superintendent's Desk**



As we complete the final months of the school year, our district has much to celebrate.

First, Ripon was named by Nerdwallet as a top ten Best Cities for Young Families in Wisconsin. The distinction is based on communities that offer the best combination of solid schools, great neighbors, and

affordability. RASD is proud to be part of the reason Ripon received this recognition.

Second, the planning around the 6-12 facility is moving forward following the School Board's approval of the final floor plan in March. The groundbreaking for the project is set for April 8 at 2:00 p.m. in front of RHS. Please consider joining your neighbors as we start the construction on our 6-12 facility.

This edition of the district newsletter highlights the critical work being done to prepare for the future. A district strategic planning team consisting of over 30 people from across the community are meeting through the rest of the school year to review the district's mission, vision, and strategic direction.

You can learn more about the impact of the Governor's proposed budget on the future of RASD in this newsletter and by visiting the district website to read the Board's budget resolution. The resolution calls for our local legislators to advocate for schools when approving the current biennial budget and to support changes to the current state-wide funding formula.

This April, I will be traveling back to China with two other staff members through a UW Colleges program to establish pathways for high school students from China to study in Ripon. International students can bring new learning opportunities and critical revenue into our schools. The partnerships also will provide increased opportunities for Ripon High School students and staff to travel and learn abroad.

This newsletter highlights the academic and musical achievements of RASD students and recognizes staff for their accomplishments.

As we move forward to build an even stronger, higher achieving district, I want to thank you for your continued support and involvement in the district. Together we are changing students lives by investing in their future.

Respectfully yours,  
 Dr. Mary Whitrock  
 Go Tigers!



Ripon Middle School students performed "Repeat After Me" for parents and family under the direction of Mr. Brian Reilly and Mrs. Christina Muenchow.

**Open Enrollment Deadline Approaching**

Applications for Open Enrollment will be accepted until April 30, 2015 at 4:00 p.m. Any Wisconsin parents/guardians who are not Ripon Area School District residents, but want their child to attend public schools in Ripon for 2015-16, may apply for enrollment acceptance.

In accordance with state law, applications must be on site at the Ripon Administrative Services Center, 1120 Metomen Street by the deadline date. Postmark dates will not satisfy the deadline requirements. Online applications are encouraged and recommended. Please go to <http://oe.dpi.wi.gov> for more information or to complete and online application.

**Special Facilities Section**  
 (see pull-out insert)

**Groundbreaking!**

\*\*\*\*\*

6-12 Facility

April 8, 2015

2:00 p.m.

Front entrance of  
 Ripon High School

Public Welcome!



**Staff to Travel Back to China**

Three members of the Ripon Area School District team will return to China this spring. Superintendent Mary Whitrock, Curriculum Director Chrissy Damm, and High School Teacher Rick Kelm will travel abroad from April 11-19 to meet with dignitaries and heads of schools through a program with the University of Wisconsin Colleges to recruit international students from China to attend high schools in Wisconsin. International students will bring new learning opportunities to students and staff in the district.

These incoming students will pay tuition to study at the high school level, bringing equally critical revenue to the district at a time of declining state support. Finally, these international alliances open possibilities for increased study abroad opportunities for Ripon High School and Lumen Charter High School students and international professional development opportunities for staff. The intent is to create similar pathways for students not only from China but other countries of the world to study in Ripon.



**6-12 Facility Floor Plan Approved**

The Ripon Board of Education unanimously approved the floor plan and \$1.9 million in change orders for the 6-12 facility at its March 16th School Board meeting. The updated building plan includes additional space and increased heavy remodeling from the original plan. The Board authorized the use of \$1,000,000 of district fund balance and approved a resolution to borrow \$900,000, if needed, to afford the additions to the project. The borrowing will not increase the tax levy.

Based on community and staff feedback, the additional improvements to the plan include expanding the high school commons by 20 feet and adding:

- 9,127 sq ft to the STEM (science, technology, engineering and math) agri-science and consumer science wing;
- 1,440 sq ft to the music and technical education areas;
- 5,840 sq ft to the gymnasium allowing for a third station;
- 1,460 sq ft in increased storage configuration;
- 127 sq ft for a pool vestibule;
- 4,512 sq ft for a courtyard infill to add MS academic space; and
- 3,956 sq ft of additional heavy remodeling.

Given the School Board's approval of a resolution to borrow an amount not to exceed \$900,000, a notice is being published in the paper announcing a 30-day petition period. Community members have the option to sign a petition if they do not want the Board to move forward with the additional space. Per Wisconsin State law, the number of signatures required is the lesser of 7,500 or 20% of the number of electors in the last governor's general election.

The short-term loan will not increase the tax levy as it will be paid back through the district's operational budget. The use of a proposed \$1,000,000 of district fund balance for this one-time capital project would positively impact state aid and reduce the property tax levy in subsequent years for taxpayers.

**Strategic Planning**



Throughout the second semester, a team of over 30 representatives including Board members, administrators, teachers, students, staff and community members will be engaging in the District's strategic planning process. The team's charge includes recommending to the Board of Education a new mission, updated vision, and strategic course to serve the District community over the next three to five years. The team accepted the challenge to push the District beyond being really good towards becoming great.

**Project Showcase Events for Charter Schools**

~ See student learning in action ~

May 7	Catalyst	5:00 – 7:00 p.m.
May 19	Quest	6:00 – 7:30 p.m.
May 28	Journey	5:30 – 7:00 p.m.

**Mark Your Calendars!**

PARA ESPAÑOL VEA LA ULTIMA PAGINA

ECRWSS

POSTAL CUSTOMER

RIPON WI 54971

NONPROFIT ORGANIZATION  
 U.S. POSTAGE PAID  
 RIPON, WI 54971  
 PERMIT NO. 197



## Music & Art Month



March is Music in Our Schools and Youth Art Month. A combined event was held on March 17th at 7:00 p.m. in the RHS gymnasium. Band and choir musical performances included the 5th grade choir, middle school band, middle school choir, high school bands, and the high school choirs. The event also included a mini art gala that highlighted both 2D and 3D student artwork. The display pedestals used by the art department in the gala were made by high school students during their tech. ed. classes. There was also a very special "live painting" session that featured four art students of varying abilities painting during the final music presentation of the evening. This was truly an impressive showcase of RASD's fine arts programs.

## Calendar News

The 2015-16 edition of the community calendar is being designed by Ripon High School student Nicole Rainey. The full-color calendar covers July 2015 through June 2016.

The calendar will be bulk mailed to all households with a 54971 zip code in mid-June. Additional copies will be available in the district office and each school office.

## Healthy Eating with My Plate

The USDA has developed a website and tool called ChooseMyPlate.gov to help us make smart food choices. The plate graphic, with its different groups, is a reminder of what and how much we should be putting on our plates to stay healthy. Each section is a different size and color so you can see at a glance how much of these foods to eat.

The plate picture reminds us to choose variety. The best meals have a balance of items from different food groups. Half of your plate should be fruits and vegetables. Drink fat-free or low-fat (1%) milk and water instead of soda, sports drinks and other sugary beverages. Lastly, it reminds us to avoid oversized portions.

**Vegetables:** It's one of the largest sections on the plate because vegetables provide many of the vitamins and minerals we need for good health. They are naturally low in calories and the fiber helps us feel full.

**Fruits:** This section is slightly smaller than the vegetables, but together they should fill half of your plate. Whole fruit is the best choice. About 4 ounces of 100 percent fruit juice equals one serving of fruit. However, juice lacks the fiber and other nutrients of whole fruit so try to limit the amount of juice you drink.

**Grains:** Try to choose at least half of your day's grains from whole-grain sources like whole-wheat bread, brown rice or oatmeal.

**Protein:** Foods high in protein help the body build, maintain and repair tissue. Choose lean or low-fat options and try to minimize deli meats and other processed meats that are high in sodium.

**Dairy:** These foods are rich in calcium, which is essential for growth and building strong bones and teeth. The blue circle shows dairy as a side to your meal, but dairy can be incorporated into the meal, like in a cheese quesadilla.

We strive to follow the My Plate concept at every meal we create. Students are encouraged to pick a variety of foods at breakfast and lunch and to try new things. If you have any questions about the menus, please contact Briony Storz FSD at 920-748-4603. Parents are encouraged to check the parent portal on the RASD website to check account balances or to make payments to their child's lunch account.



## Curriculum Corner



Mrs. Christine Damm  
Curriculum Director

The renovation of our schools does not merely involve a facelift to our facilities. Today's learners require a renovation to the traditional instructional methods of imparting knowledge and shifting the focus of activity from the teacher to the learner. Student-centered learning environments encourage students to become more independent learners and become actively involved in their own education.

While you have seen the construction blueprints for our upcoming renovation projects, let's take a closer look at what the blueprints of instruction will look like for our new generation of learners. In our student-centered classrooms, you will observe a great deal of collaboration. You will notice desks or tables that are arranged in groups rather than

in rows. In this type of arrangement, the teacher acts as a facilitator and co-learner in the discussions and projects taking place rather than just lecturing about things students need to know.

You will witness students taking assessments that ask open-ended questions with opportunities for reflection and synthesis of what they have learned. You will see fewer worksheets and multiple-choice type questions. In today's classrooms, assessments require higher levels of thinking and allow students to apply their thinking through more meaningful ways.

In this same regard, you will see students actively engaged in the learning process, as their experiences are relevant to their interest. Instructional planning becomes much more flexible, which is a major shift from prescribed lesson planning. Teachers become more sensitive to students' individual needs while honoring their passion and interest by providing more student choice.

Student-centered learning is more about problem solv-

ing, critical thinking and creativity than it is about compliance. You will see students taking on more active roles as learners and the teachers acting as facilitators who empower their students rather than requiring conformity. Student-centered environments encourage dialogue and student involvement rather than passivity and simple note taking.

Students will come to school because they want to be here and because they know they are valued. Today's learners are viewed as community members rather than clients. They are involved in decision making based on trust and mutual respect in an arena where collaboration is the key to success. Risk taking is promoted and students quickly understand that failure leads to opportunity.

As the Ripon Area School District undergoes construction, rest assured that it is not limited to the walls and spaces we occupy. Our transformation goes much deeper to include the occupants and their perceptions of both teaching and learning.

## BRAVE Program

Students in our BRAVE programs at Barlow Park/Journey and Murray Park/Quest just started their Spring Session of classes. Our after-school programs boast a variety of enrichment classes in this final session of our school year. Enrichment classes are designed to give students the opportunity to have new experiences through hands-on, active learning. Classes range from crafting and arts to science experiments and computer coding. Staff strive to offer a range of classes that will fit most students' interests.

While the enrichment classes offer time for fun and exploration, the key components of the program are homework help, intervention tutoring, and general academic support. Skilled tutoring staff is comprised of district teachers and support staff as well as Ripon College Education majors and Ripon High School students. Most students are able to get their daily homework completed at BRAVE. Having homework done under the guidance of school staff assures that

concepts are reinforced and completed correctly. Knowing that homework is done, parents can focus on family time with students after BRAVE.

Middle School/Catalyst students utilize a "drop-in" style approach to BRAVE homework help. With parent permission, any RMS/Catalyst student can come to BRAVE whenever they need help with an assignment, to study for an exam, or to simply work on a difficult subject. Staff have organized special events such as cooking classes, service projects, crafting projects, games and activities and a self-defense class.

Recently BRAVE partnered with the Ripon Police Department to lead a program on Cyber Safety. Those in attendance were provided with information about the dangers and safeguards through the use of the Internet and social media. Other family programs offered this past year include information on ADHD and interactive family events such as "Breakfast for Dinner" and "Family Concoctions".

## Summer School

The District's K-12 Summer School opens on June 15 for its 5-week session with enrichment classes, remedial classes, swimming lessons, and athletic programs. Classes are held at all four buildings. Registration materials will be sent home with students the week of April 20th. Student enrollments are counted for state aid which reduces local taxes.

# Special Facilities Insert

## Exterior Elevations of 6-12 Facility



Proposed High School Addition - Entry, Admin Suite & Community Room



Proposed High School Addition - Commons Area



Proposed Middle School Addition - Entry & Admin Suite


# Special Facilities Insert

## Facility Site Plan







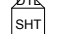
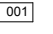

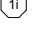

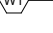
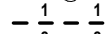

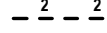

### GYPSUM BOARD PARTITIONS - GENERAL NOTES

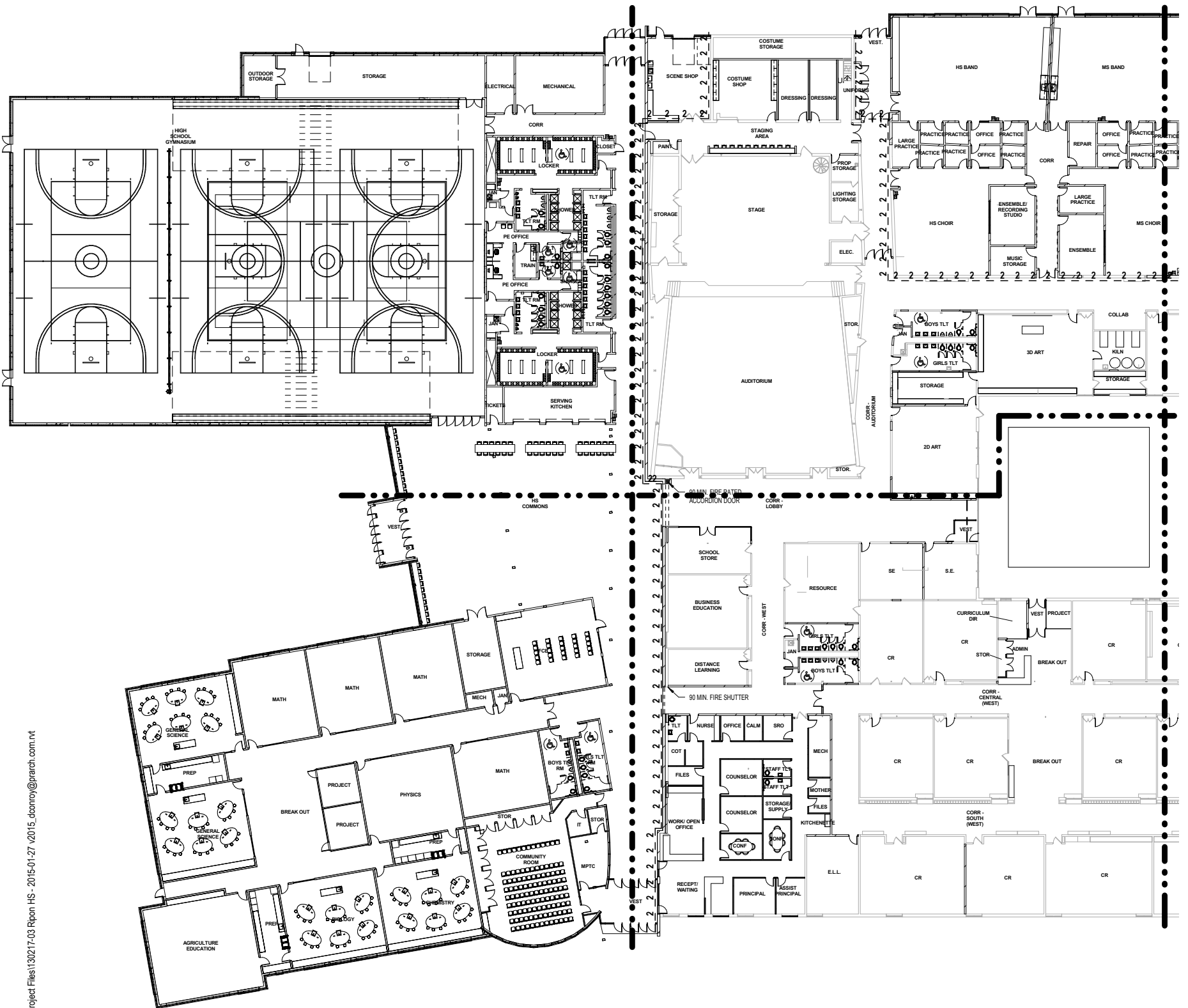
ALL GYPSUM BOARD PARTITIONS SHALL BE (A6) UNLESS OTHERWISE NOTED ON FLOOR PLAN.  
 GYPSUM BOARD PARTITION DIMENSIONS ON FLOOR PLAN ARE BASED ON FACE OF FINISHED PARTITION TO FACE OF FINISHED PARTITION (NOMINAL).  
 REFER TO GYPSUM BOARD SPECIFICATION FOR LOCATION AND TYPE(S) OF GYPSUM BOARD MATERIAL REQUIRED.  
 PROVIDE TYPE 'X' FIRE RATED GYPSUM BOARD AT ALL FIRE RATED PARTITIONS.  
 SEAL ALL WALL PENETRATIONS AT PERIMETER AND FIRESTOP ALL FIRE RATED PARTITIONS.  
 EXTEND ALL GYPSUM BOARD PARTITIONS FULL HEIGHT TO UNDERSIDE OF STEEL DECK ABOVE UNLESS NOTED OTHERWISE. AT METAL DECK CONSTRUCTION ABOVE, PROVIDE SLIP JOINT BETWEEN TOP OF PARTITION AND UNDERSIDE OF METAL DECK / STRUCTURAL STEEL MEMBER ABOVE. REFER TO DETAIL XX/XXX.  
 CLASSROOMS: PROVIDE ABUSE RESISTANT GYPSUM PANELS TO 4'-0" A.F.F.  
 CORRIDORS: PROVIDE ABUSE RESISTANT GYPSUM PANELS TO 8'-0" A.F.F.

### MASONRY PARTITIONS - GENERAL NOTES

MASONRY PARTITIONS INDICATED WITH THE FOLLOWING HATCH PATTERN:   
 ALL MASONRY PARTITIONS SHALL BE 8" CONCRETE BLOCK UNLESS OTHERWISE NOTED OR DIMENSIONED. REFER TO FLOOR PLAN FOR PARTITION THICKNESS.  
 PROVIDE UL RATED CONCRETE BLOCK AT ALL FIRE RATED PARTITIONS.  
 SEAL ALL WALL PENETRATIONS AT PERIMETER AND FIRESTOP ALL RATED PARTITIONS.  
 EXTEND CONCRETE BLOCK PARTITIONS FULL HEIGHT TO UNDERSIDE OF STEEL DECK ABOVE (OR PRECAST PLANK ABOVE). REFER TO DETAIL XX/XXX. PROVIDE HORIZONTAL MASONRY JOINT REINFORCEMENT AT 16" OC VERTICALLY. REFER TO STRUCTURAL DRAWINGS FOR VERTICAL REINFORCEMENT REQUIREMENTS.  
 PROVIDE CORE-FILL ACOUSTICAL INSULATION AT ALL CONCRETE BLOCK WALLS OF THE MUSIC ROOMS.

### FLOOR PLAN - SYMBOLS LEGEND

	NEW WALL/PARTITION		EXISTING WALL TO REMAIN
	NEW DOOR		EXISTING DOOR TO REMAIN
	SECTION REFERENCE		DETAIL REFERENCE
	EXTERIOR ELEVATION		EQUIPMENT
	INTERIOR ELEVATION		WINDOW TYPE
	FLOOR PLAN KEYNOTE		WALL/PARTITION TYPE
	ONE HOUR FIRE RESISTIVE CONSTRUCTION		FLOOR DRAIN - PITCH FLOOR TO DRAIN
	TWO HOUR FIRE RESISTIVE CONSTRUCTION		BUILDING MATCH LINE



# Special Facilities Insert

## Facility Site Plan

### FLOOR PLAN - GENERAL NOTES

- A. DIMENSIONS ON FLOOR PLAN ARE BASED ON FACE OF FINISHED WALL TO FACE OF FINISHED WALL.
- B. VERIFY ALL DIMENSIONS AND CONDITIONS AT JOB SITE.
- C. MAINTAIN CONTINUOUS UTILITY SERVICE TO ALL SPACES IN THE BUILDING NOT AFFECTED BY THIS WORK. COORDINATE WITH OWNER ANY DISRUPTION IN SERVICES REQUIRED TO PERFORM WORK OR TO MODIFY EXISTING PIPING, DUCTWORK OR ANY ASSOCIATED EQUIPMENT.
- D. REFER TO SHEET A89X FOR ROOM FINISH SCHEDULE AND NOTES.
- E. REFER TO SHEET A89X FOR DOOR SCHEDULES, DOOR TYPES, AND NOTES.

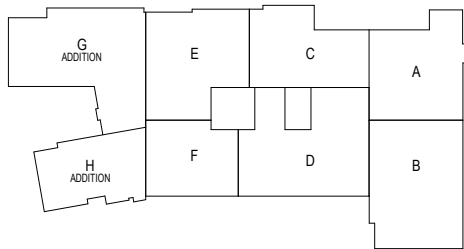
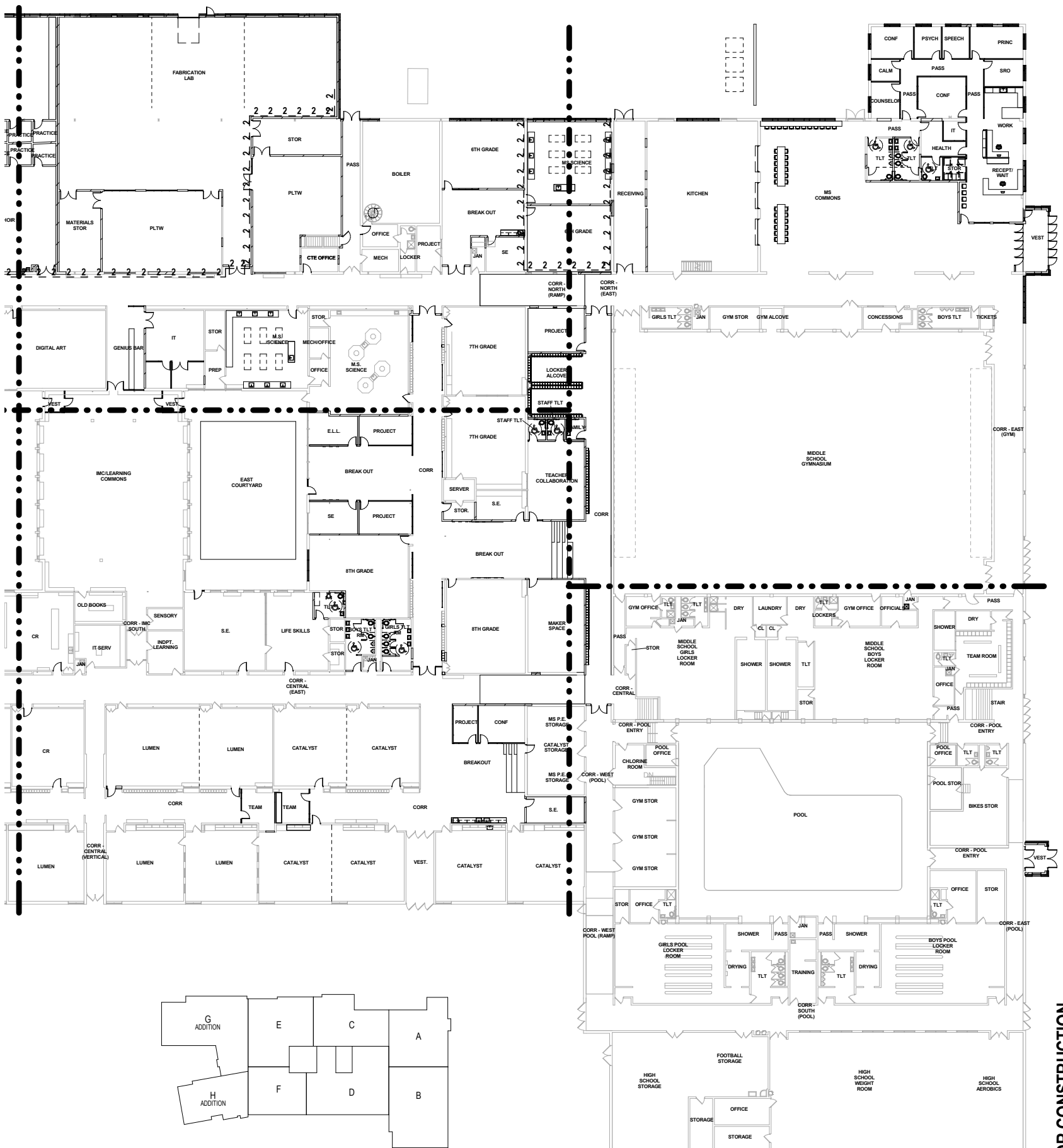


Facility Improvements

Ripon Area  
School District

Building Our Future

Facility Opening August 2016!

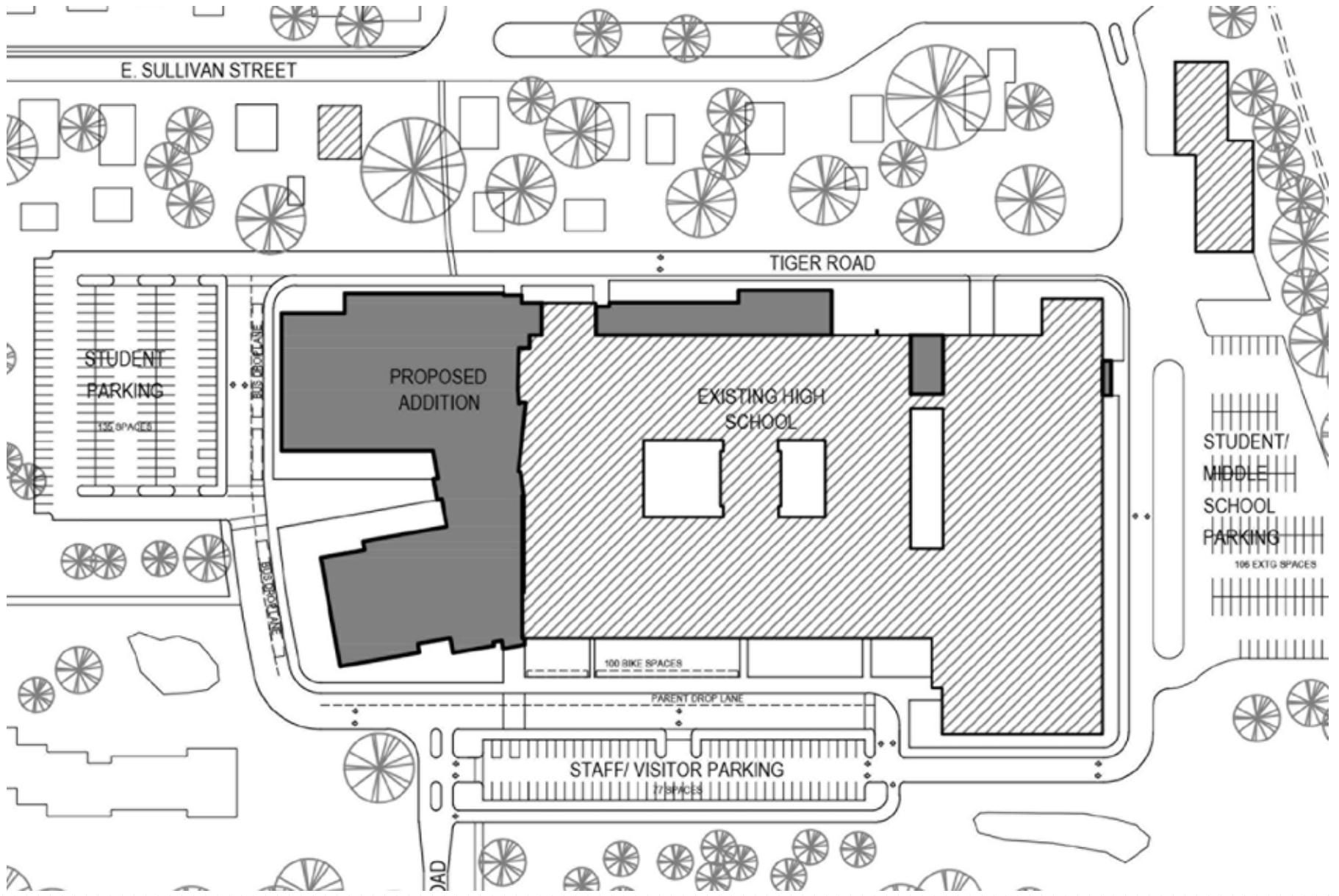


TRUE NORTH  
FIRST FLOOR PLAN - OVERALL  
3/64" = 1'-0"

NOT FOR CONSTRUCTION  
© Plunkett Raysich Architects, LLP

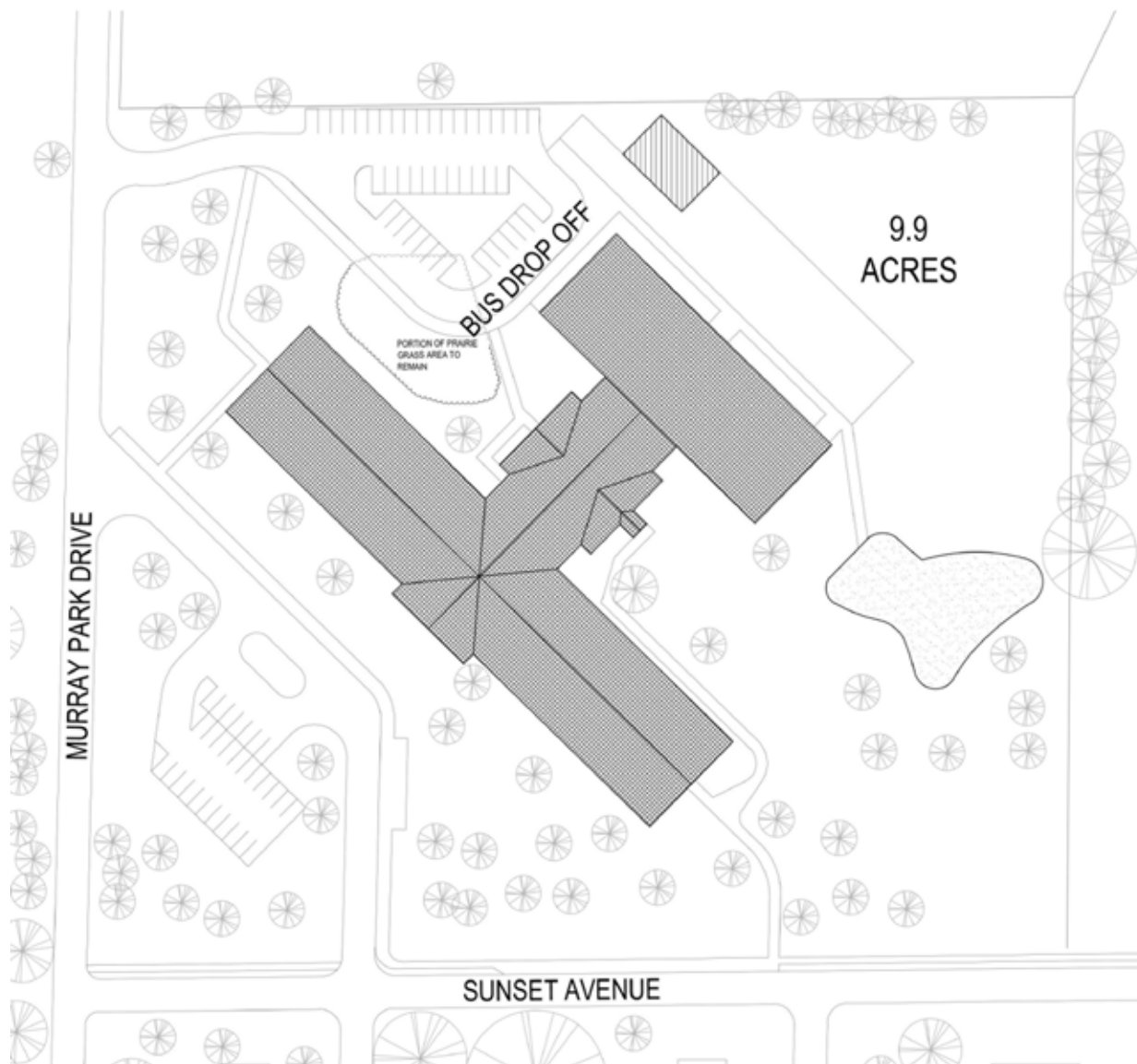
# Special Facilities Insert

## Facility Site Plans



6-12 Facility Site Plan

Murray Park Bus Loop



## Early Career Educator Award

The Ripon College Department of Educational Studies has selected Ripon Middle School Teacher Barb Korneli-Krueger to receive the Early Career Educator and Pre-service Educator Mentor Award for 2015. The Wisconsin Association of Colleges for Teacher Education will recognize Mrs. Korneli-Krueger at a reception in Madison in April. This award is presented to an outstanding educator who has demonstrated a sustained pattern of mentoring pre-service educators for at least five years.



Ripon had 24 students compete in the Junior Math Meet held in Menasha. Every member of the team scored points! Congratulations to 7th grader Kyleigh for taking 1st place among all 7th graders at the meet!

## Playschool Fun

Is your child between the ages of 3-5 and ready to have some fun?

The Ripon High School Child Development and Early Childhood Education classes are looking for children to attend our annual Playschool.

Playschool will run every Tuesday through Friday from April 21st until May 15th. Classes will begin at 10:15 a.m. and end at 11:50 a.m. on Tuesdays, Thursdays, and Fridays. On Wednesdays, the Ripon School District has a late start schedule so Playschool will begin at 10:35 a.m. and end at 12:00 p.m.

Children should be ages 3-5 and toilet-trained before Playschool begins. Please call 748-4616 or email [esalak@ripon.k12.wi.us](mailto:esalak@ripon.k12.wi.us) to contact Mrs. Esala for an enrollment form or additional information.

## Budget Resolution

This year, the proposed budget allocation for the district is less than anticipated. At the March Board meeting, the Ripon Board of Education unanimously approved a resolution regarding the impact Governor Walker's proposed biennial budget plan would have on RASD for the 2015-17 school years. The resolution notes the reductions to the district budget since 2008 and calls on legislators to advocate on behalf of the district in the short term by addressing the current budget proposal as well as in the long term by addressing the State's school funding formula. The proposed budget change has increased conversations across the state between school districts, school boards and legislators. The Budget Resolution is posted on the district's website.

## School Memorials

As the start of construction approaches, the RASD is looking to connect with community members that have a memorial for a loved one in the current Ripon Middle School or Ripon High School or on the surrounding grounds. Please call the District office at 920-748-4600 to provide information regarding the memorial. The District wants to ensure solid communication is established with family members so they know how the building changes may impact the memorial. This is an important first step in planning how to move forward together.

## Upcoming School Board Meetings

Monday, April 20  
Monday, May 18  
Monday, June 15

6:00 p.m.  
Room 167 at RHS

**Mark Your Calendars!**



Congratulations to Catalyst 6th-grade student Cali for taking 1st place in the local division in the Fond du Lac County Land Conservation's poster contest! Cali's work was selected from many other student entries from communities within Fond du Lac County to show the theme "Local Heroes - Your Hardworking Pollinators".



## Murray Park/Quest Science Fair

A nearly record-breaking 191 student experiments were on display at this year's 2015 Murray Park/Quest Science Fair. Students shared their knowledge of the scientific method including problem, hypothesis, experiment, observation, and conclusion. They created a display board/poster for their experiment and shared their knowledge of their experiment with visitors. As part of the event, Dr. Dean Katahira, chemistry students from Ripon College, and retired Ripon College professor Dr. Mary Williams-Norton discussed the Science Fair experiments with the students and gave each student a participation ribbon.

## French Adventure



Twenty-one French students, accompanied by their teachers, will be visiting Murray Park and Quest. The students will be coming from their school in Paris, France and staying with host families throughout the Ripon community. The Ripon student host has the opportunity to visit France for a two to three week period this summer. The French students will arrive on May 5 and return to France on May 25.



7th and 8th graders in Mrs. Osheim's math classes celebrated Pi Day! Students measured a variety of round objects to demonstrate how the circumference of a circle is approximately 3.14 times the diameter of a circle. Included in the celebration were cartoons, songs, games, and eating pie!



Ripon High School Cheer & Stunt Team was recognized for recently taking 5th place in the State Competition.

Check the web for 100s of photos!  
[www.ripon.k12.wi.us](http://www.ripon.k12.wi.us)



The Board recognized students who qualified for the Regional Spelling Bee.

**Administrative Services Center**  
748-4600  
1120 Metomen Street  
P.O. Box 991  
Superintendent: Dr. Mary Whitrock  
Business Manager: Mr. JJ Gutman

**Barlow Park Elementary School**  
**Journey Charter School**  
Grades PreK-2  
748-1550  
100 Ringstad Drive  
Principal: Dr. Myra Misles-Krhin

**Murray Park Elementary School**  
**Quest Elementary Charter School**  
Grades 3-5  
748-4695  
64 Sunset Avenue  
Principal: Mr. Randy Hatlen

**Ripon Middle School**  
**Catalyst Charter Middle School**  
Grades 6-8  
748-4638  
651 Metomen Street  
Principal: Mr. Tom Hoh

**Ripon High School**  
**Lumen Charter High School**  
Grades 9-12  
748-4616  
850 Tiger Drive  
Principal: Mr. Seth Meinel  
Assistant Principal: Mr. Rick Bunge

**Crossroads Academy**  
Grades 8-12  
Principal: Ms. Anne Lang

**Ripon Board of Education**  
President: David Scott  
Vice President: Tom Stellmacher  
Clerk: Barb Schultz  
Treasurer: Gary Rodman  
Members: Andy Lyke  
Sherry Muskavitch  
David Olson  
John Sperger  
Dan Zimmerman

**Board Meetings**  
Regular board meetings are held on the third Monday of each month in Ripon High School's multi-purpose room 167 at 6:00 p.m. Any additional meetings are duly posted at the Ripon Public Library and at the Ripon City Hall. For additional information contact the school district administrative office at 748-4600.

The Ripon Area School District does not discriminate on the basis of sex, color, national origin, ancestry, creed, pregnancy, marital status, genetic information, sexual orientation, or physical, mental, emotional, or learning disability or handicap or any other characteristic protected by law.



## Agri-Business Fair



For 28 years, seventh grade students at Ripon Middle School and Catalyst Middle School participated in the annual Agribusiness Fair. An afternoon each spring welcomes community members, FFA members, silage smells, several animals, and snacks for students to expand their knowledge in the evolving Agribusiness field. Over the years, several community members take the time out of their busy day to present careers in organic farming, landscaping design, banking, mining, animal nutrition and health, breeding, and more. This day could not happen without the dedication and coordination of Bryan and AnnDee Peth. The Peths have been the driving force every year organizing speakers, acting as the liaison between the high school and middle school, and ringing the cow bell in the hallways to keep the day moving on schedule. We can not say thank you enough for all the work the Peths put into this tradition. The opportunity to climb in a combine, pet an alpaca, sample some local crops all while being exposed to a variety of career options make this event a wonderful experience for all students.

## Resumen de noticias escolares para nuestros residentes de habla española

### Planeamiento Estratégico

En el transcurso del segundo semestre, un equipo de más de 30 representantes incluyendo miembros del Consejo, administradores, maestros, estudiantes, personal, y miembros de la comunidad estarán involucrados en el proceso del planeamiento estratégico del Distrito. El cargo del equipo incluye recomendar a la Junta de Educación una nueva misión, actualizar la visión, y el curso estratégico para servir a la comunidad del Distrito durante los próximos tres a cinco años.

### Resolución del Presupuesto

Este año, la distribución del presupuesto para el distrito es menos de lo anticipado. En la reunión del Consejo en marzo, el Consejo de Educación de Ripon aprobó unánimemente una resolución en relación al impacto que tendría el plan del presupuesto bianual del Gobernador Walker en RASD para los años escolares 2015-17.

### Memorial Escolar

Ya se acerca el comienzo de la construcción, RASD está viendo cómo conectarse con miembros de la comunidad que tengan un memorial en honor a un ser querido en el actual Ripon Middle School o en Ripon High School o en los alrededores. Por favor llame a la oficina del Distrito 920-748-4600 para proveer información en relación al memorial.

### Personal de Ripon Viajarán de Regreso a China

Un equipo de tres miembros del Distrito Escolar del Area de Ripon regresará a China esta primavera. La Superintendente Mary Whitrock, Directora de Currículo Chrissy Damm, y el profesor de High School Rick Kelm viajarán del 11 al 19 de abril con dignatarios y líderes escolares a través del programa de Universidades de la Universidad de Wisconsin.

### La Junta Escolar de Ripon School Aprueba el Plan de las instalaciones de 6-12

El Consejo Escolar de Educación unánimemente aprobó el plan y \$1.9 millones para el cambio de órdenes para las instalaciones de 6-12 en su reunión del 16 de marzo. El plan del edificio actualizado incluirá espacio adicional e incrementará la remodelación pesada del plan original.

### Inauguración del Inicio de Construcción

La inauguración del inicio de construcción para las instalaciones de 6-12 grados está fijada para el 8 de abril a las 10:00 a.m. en frente de Ripon High School. Por favor únase a la comunidad en celebración de este momento tan importante en la historia de RASD y la comunidad.

### Premio de Educación de Profesión Temprana

El Departamento de Estudios Educativos de Ripon College ha seleccionado a la maestra Barb Korneli-Krueger de Ripon Middle School para recibir el premio de Educación de Profesión Temprana y Pre-servicio en Consejo de Educación para el 2015. La Asociación de Universidades de Wisconsin para Maestros de Educación reconocerá a la Sra. Korneli-Krueger en una recepción en Madison en Abril.

## Ways You Can Help Ripon Schools

**Boxtops Needed** — Clip the Boxtops for Education logo on many household products and drop-off at any school office. Some of the many products with the logo are: Betty Crocker, Pillsbury, General Mills, Ziploc, Hefty, Kleenex, and Huggies.

**STEP Volunteers** — Senior citizens can save on property taxes by volunteering in Ripon schools. Contact the District office at 748-4600 to get more information.

**READ Dogs** — Bring your dog to school and let students read to "Fido." Contact Ms. Pat Grahn at 920-572-6585 to learn about training your dog in the READ program.

### Journey Governance Council

President: Bethany Nodolf  
Vice President: Shelly Kastenschmidt  
Treasurer: Wayne Webster  
Secretary: Carrie Naparalla  
Members: Christine Damm  
Steve Nankervis  
Amy Pollesch  
Sarah Rieder  
Bill Schultz

### Quest Governance Council

President: Julia Messitte  
Treasurer: Nicole Bauman  
Secretary: Linda De Cramer  
Members: Becki Baird  
Drew Diedrich  
Gretchen Geiger  
Haley Julian  
Brenda Rapp  
Bill Whitehead

### Catalyst Governance Council

President: Jack Christ  
Vice President: Renee Schoff  
Secretary: Candie Baker  
Members: Jen Erickson  
Amy Pollesch  
Sandy Wisneski

### Lumen Governance Council

Members: Pat Grahn  
Paula Hageman  
Adam Jacobi  
Jean Rigden

## Stay Informed about Ripon Schools

\*\*\*\*\*

**District Website** — The website includes current news and a calendar of events for the entire district.

**Facebook** — Dozens of albums and hundreds of photos from school activities fill the District's Facebook page. Anyone can access it from the District's web page.

**Email News Network** — Sign up for free email updates of news about what's happening in Ripon schools. To subscribe send an email to: whitrockm@ripon.k12.wi.us.